

The background of the slide is a deep blue space filled with numerous stars and a prominent blue nebula. On the right side, a large, reddish-brown planet, likely Mars, is partially visible, showing its surface texture. The text is overlaid in white, bold, sans-serif font.

**NASA/MARSHALL SPACE FLIGHT
CENTER**

JOINT COUNSELING SESSION

**PROWSE MANUFACTURING
GROUP**

JUNE 7, 2022

Background

| | | | |
|----------------------|--|-------------------------------|---|
| COMPANY NAME: | PROWSE MANUFACTURING GROUP (dba INFINITY FABRICATION) | ADDRESS: | 3815 124TH ST NE, MARYSVILLE, WA 98271 |
| OWNER: | JIN PROWSE | CONTACT NAME: | JIN PROWSE |
| EMAIL: | JIN@PROWSEGROUP.COM | YEARS IN BUSINESS: | 2018 Merger Original Est. 1994 |
| CAGE CODE: | 937T3 / 06DM5 | DUNS NUMBER: | 117021144 / 959271594 |
| WEB SITE: | WWW.PROWSEGROUP.COM | NAICS CODES: | 332710, 332322, 332322, 332999, 336413, 332510, 336413, 326199, 333514, 336142, 541330 |

Business Size & Classifications

| | |
|-------------------------|-------------|
| TOTAL EMPLOYEES: | 25 |
| AVERAGE SALES: | \$4M |

| CLASSIFICATIONS (select from list below): | Yes/No |
|--|---------------|
| SMALL BUSINESS | YES |
| SMALL DISADVANTAGED BUSINESS | YES |
| NATIVE AMERICAN-OWNED | |
| ALASKAN NATIVE CORPORATION | |
| WOMEN OWNED | YES |
| ECONOMICALLY DISADVANTAGED WOMEN OWNED | YES |
| VETERAN-OWNED | |
| SERVICE DISABLED VETERAN OWNED | |
| HUBZONE CERTIFIED | |
| 8(A) CERTIFIED | |
| 8(A) EXPIRATION DATE (if applicable) | |

Quality Systems

- AS9100D/ISO9001
- NIST 800-171 Compliant
- ITAR
- JCP

Skills & Processes

Prowse Manufacturing Group/Infinity Fabrication Inc. specializes in precision formed sheet and CNC machine components and assemblies supporting aerospace, defense, and other commercial industries. We have expertise in manufacturing components from Boeing, Northrup Grumman, Lockheed Martin, Sikorsky, Fairchild, McDonnell Douglas, Safran, and General Dynamics.

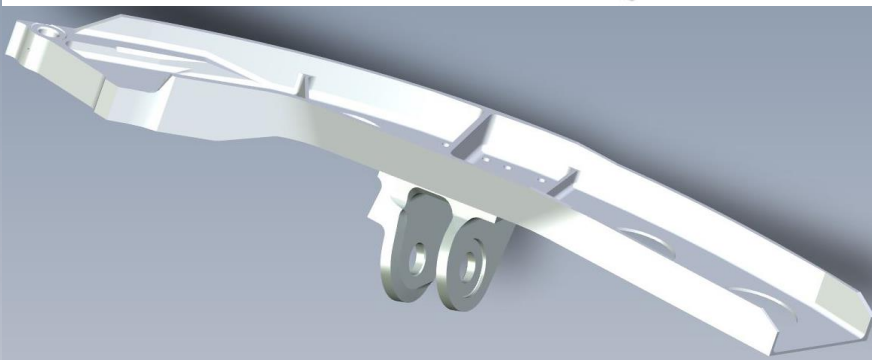
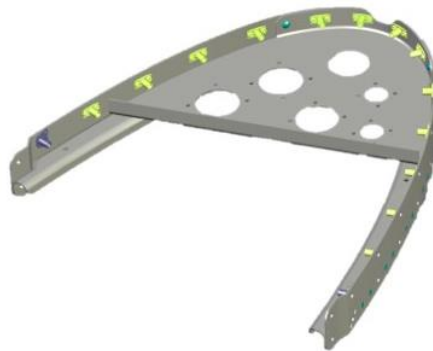
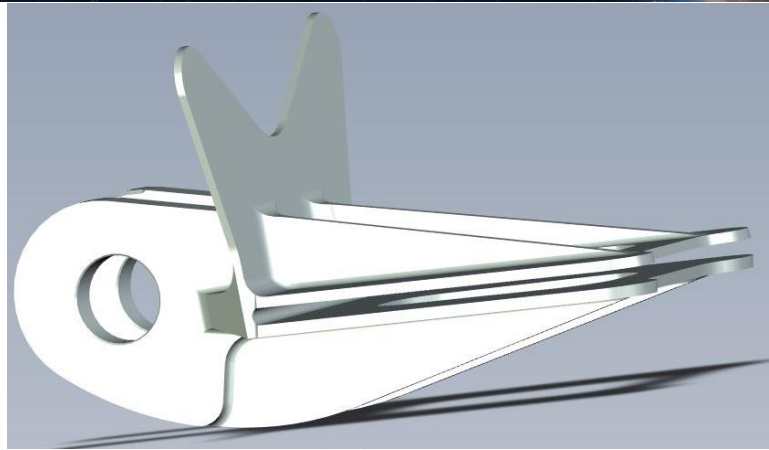
Core Competencies

- Specialty Sheet Metal Forming (hydro-form, brake-form, coin, draw forming, and hand-forming)
- Precision CNC Machined Parts and Assemblies
- Rapid Prototyping

Capabilities

- 4-axis CNC machining up to 150" length
- Hydro-forming up to 29" x 96"
- Brake-form up to 144"
- High tolerance assembly

Skills & Processes (Cont.)



Customers

- DLA
- SAFRAN
- COLLINS AEROSPACE
- SENIOR AMT

Principle Point(s) of Contact

| NAME | TITLE | PHONE | EMAIL |
|-------------------|--------------|--------------|---------------------|
| JIN PROWSE | CEO | 360-403-8910 | JIN@PROWSEGROUP.COM |
| | | | |
| | | | |
| | | | |