



# HBCU/MSI JCI FEATURING:

LANGSTON UNIVERSITY

Byron Quinn

APRIL 13, 2022



# LANGSTON UNIVERSITY

<b>College/ University Name</b>	Langston University	<b>Campus Address:</b>	P.O. Box 1500, Highway 33 East Langston, OK 73050-1500
<b>President:</b>	Kent J. Smith Jr., PhD	<b>Main Phone Number:</b>	405-466-3201
<b>E-mail Address:</b>	<a href="mailto:president@langston.edu">president@langston.edu</a>	<b>Year Established:</b>	1897
<b>Website:</b>	<a href="https://www.langston.edu/">https://www.langston.edu/</a>	<b>Educational Demographic:</b>	12% Graduate with Associate, 74% Graduate with Baccalaureate, 11% Graduate with Masters and 3% Graduate with Doctorates. For STEM degrees Biology has the highest concentration of majors, followed by Agricultural Science and Chemistry. For the Bachelors of Art Degrees, Health, PE and Recreation has the highest concentration of majors followed by Psychology and Business Management

# LANGSTON UNIVERSITY CURRICULUM/PROGRAMS

- School of Agriculture
  - AS Child Development
  - BS Agricultural Science
  - BS Animal Science
  - BS Child Development
  - BS Early Childhood Education
  - BS Family and Consumer Science
  - BS Family and Consumer Science Education
- School of Arts and Sciences
  - AA General Studies
  - AS Criminal Justice
  - AS Drafting & Design
  - AS Electronics
  - BA Broadcast Journalism
  - BA English
  - BA Sociology
  - BAE English Education
  - BAE Music Education

# LANGSTON UNIVERSITY CURRICULUM/PROGRAMS (CONT.)

- School of Arts and Sciences  
(Continued)

- BS Biology
- BS Chemistry
- BS Corrections
- BS International Studies
- BS Mathematics
- BS Organizational Leadership
- BS Technology

- BSE Biology Education
- BSE Chemistry Education
- BSE Mathematics Education
- BSE Secondary Education
- BSE Social Science Education

# LANGSTON UNIVERSITY CURRICULUM/PROGRAMS (CONT.)

- School of Business

- AS Financial Planning
- BBA Accounting
- BBA Business Administration
- BBA Economics
- BBA Finance
- BBA Management
- BBA Management Information Systems

- BBA Supply Chain Management
- BS Accountancy
- BS Computer Science
- Graduate Level
  - MES Entrepreneurial Studies

# LANGSTON UNIVERSITY CURRICULUM/PROGRAMS (CONT.)

- School of Educational and Behavioral Sciences
  - BA Liberal Education
  - BA Psychology
  - BS Health, PE and Recreation
  - BSE Elementary Education
  - BSE Health, PE and Recreation Education
  - BSE Special Education
- Graduate Level
  - MED English as a Second Language
  - MED Urban Education
  - MS Rehabilitation Counseling
  - MS Visual Rehab Services

# LANGSTON UNIVERSITY CURRICULUM/PROGRAMS (CONT.)

- School of Nursing and Health Professions
  - BS Health Administration
  - BSN Nursing
  - BSPH Public Health
- School of Physical Therapy
  - Doctoral Program
    - DPT Physical Therapy

# NAICS CODE(S) AND CAPABILITIES

## NAICS Code(s):

- 611310
- 5416
- 541690
- 5417
- 541715
- 5419

## Capabilities:

- Scientific Research and Management
- Genomics, Transcriptomics, Proteomics and Metabolomics
- Environmental Research
- Education and Training
- Biomedical Research
- Disability, Rehabilitation and Health Research
- Human Performance (Biomechanics)
- Chemical Analysis
- Computational Analysis
- Nursing and Public Health
- Mathematical Modeling



# NAICS CODE(S) AND CAPABILITIES

## LU Computing Center for Research and Education (LUCCRE) Resources

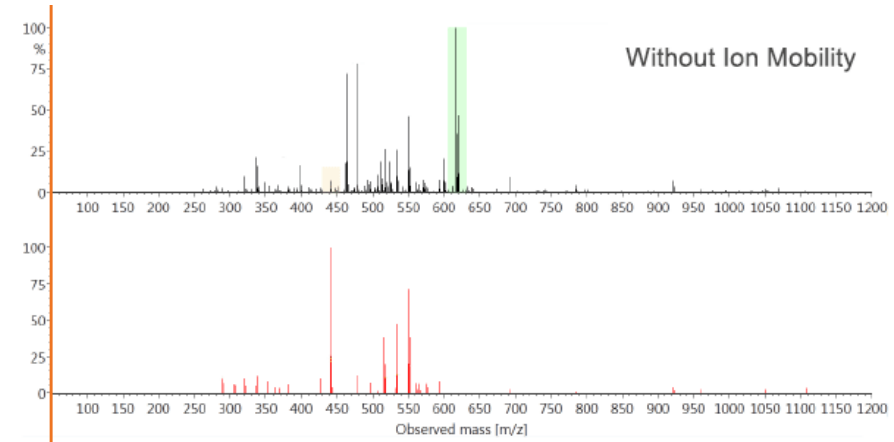
- 250 square feet space located in Hamilton Hall 108
- Part of Oklahoma's statewide research network
- High throughput computing cluster
  - 2 head nodes; one (1) 100TB storage node
  - 4 high performance GPU
  - 27 compute nodes each with 32 virtual cores
- Projects: Data Analytics, Machine Learning and AI

# NAICS CODE(S) AND CAPABILITIES

Mass Spectrometry -  
Metabolomics: Waters Vion – Ion  
Mobility



Importance of Ion Mobility



# NAICS CODE(S) AND CAPABILITIES

Mass Spectrometry - Proteomics:  
Waters Select Series Cyclic – Ion  
Mobility

- First-of-its-Kind cyclic ion mobility with unlimited experimental opportunities
- With nano-electrospray ionization



# PAST PERFORMANCE

- E. Kika de La Garza American Institute for Goat Research: Domestic research and extension programs for the USDA National Institute for Food and Agriculture (NIFA), (USAID), (BARD), and US-Egypt Science and Technology Joint Fund Program.
- Aquaculture Research Pond-USDA
- Science Research Institute: Researchers in the Science Research Institute (SRI) are working with NASA on immune countermeasures in microgravity. There is also a NIH Cancer Center Partnership at the SRI.
- STEM Double Bridge Program, National Science Foundation
- Langston's Integrated Network College Features the STEM Digital Village, LINC, Phase II, National Science Foundation
- Langston University Transportation Academy, US Department of Transportation
- HUD/HBCU Community Partnership and Outreach, US Department of HUD
- Vision Imperative Rehabilitation Services US Department of Education
- Dzero Experiment Fermi National Accelerator Laboratory
- Global Environment for Network Innovation (GENI), Raytheon BBN Technologies

# PAST PERFORMANCE NASA MIRO

- MUREP Institutional Research Opportunity (MIRO)
- Immune Countermeasures
- Payload Development for International Space Station
- NASA Administrator Visit to Langston University Science Research Institute

NASA Blog “**NASA Partners with Langston University to Study Effects of Microgravity**”



# COLLEGE/UNIVERSITY CONTACT(S)

Name	Title	Phone Number	E-mail Address
Dr. Kent J. Smith Jr., Ph.D.	President	405-466-3201	president@langston.edu
Dr. Ruth Ray Jackson Ph.D.	Vice President for Academic Affairs	405-466-6113	rrjackson@langston.edu
Dr. Alonzo Peterson	Dean Arts and Sciences	405-466-3419	alonzfp@langston.edu
Dr. Wesley L. Whittaker	Dean Agriculture and Consumer Sciences	405-466-6155	wesley.whittaker@langston.edu
Dr. Tressa Hunter	Dean Nursing and Allied Health	405-466-3274	teressa.hunter@langston.edu
Dr. Elicia Pollard	Dean Physical Therapy	405-466-2923	epollard@langston.edu
Dr. Byron Quinn	Chair Biology Dept / Director SRI	405-466-3609	byron.quinn@langston.edu