

The background of the slide is a deep space scene. It features a dark blue and black sky filled with numerous bright stars of varying colors, including white, yellow, and blue. A prominent feature is a large, reddish-brown planet, likely Mars, which occupies the right side of the frame. The planet's surface is detailed with various shades of brown and orange, showing craters and geological features. In the upper left, there's a faint, glowing nebula or galaxy structure. The overall lighting is soft, with a slight glow around the planet and stars, creating a sense of depth and vastness.

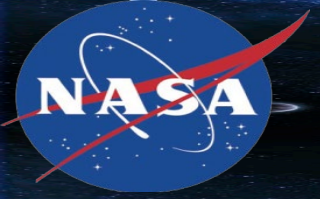
**NASA/MARSHALL SPACE
FLIGHT CENTER**

JOINT COUNSELING SESSION

I.C.E. Packaging Company, LLC
d/b/a

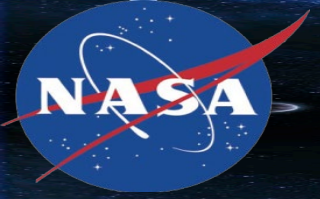
Strategic Packaging Systems (SPS)

Nancy Larson
August 26, 2025



Background

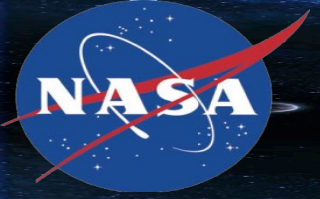
COMPANY NAME:	I.C.E. Packaging Company, LLC d/b/a Strategic Packaging Systems (SPS)	ADDRESS:	276 Warren Street Madisonville, TN 37354
OWNER:	Privately Held	CONTACT NAME:	Nancy Larson
EMAIL:	n.Larson@sponline.biz	YEARS IN BUSINESS:	16 Years
CAGE CODE:	5X2U7	DUNS NUMBER:	08-0831903
WEB SITE:	www.sponline.biz	NAICS CODES:	326111, 339999, 321920, 314910



Business Size & Classifications

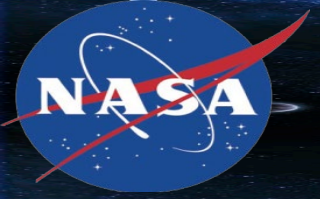
TOTAL EMPLOYEES:	60
AVERAGE SALES:	\$7.5 Million (Annually)

CLASSIFICATIONS (select from list below):	Yes/No
SMALL BUSINESS	Yes
SMALL DISADVANTAGED BUSINESS	No
NATIVE AMERICAN-OWNED	No
ALASKAN NATIVE CORPORATION	No
WOMEN OWNED	No
ECONOMICALLY DISADVANTAGED WOMEN OWNED	No
VETERAN-OWNED	No
SERVICE DISABLED VETERAN OWNED	No
HUBZONE CERTIFIED	Yes
8(A) CERTIFIED	No
8(A) EXPIRATION DATE (if applicable)	N/A



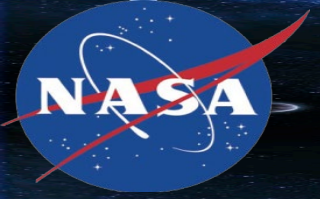
Quality Systems

- NQA-1 (Nuclear Quality Assurance -1)



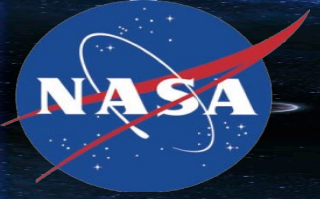
Customers

- Various US Government (USDOE, USDOD, USACE, etc..)Prime Contractors
 - AMENTUM
 - APTIM
 - Central Plateau Company
 - URS/CH2M Oak Ridge, LLC
 - Nuclear Fuel Services
 - UCOR
 - Jacobs Engineering
 - Washington River Protection Solutions, LLC
 - Turnkey Technical Services
 - Northwind
 - Portage
 - ERRG
- Various Commercial Customers
 - Duke Energy
 - Frham Safety
 - Energy Northwest
 - Veolia
 - Northstar
 - Waste Control Specialist
 - Energy Solutions



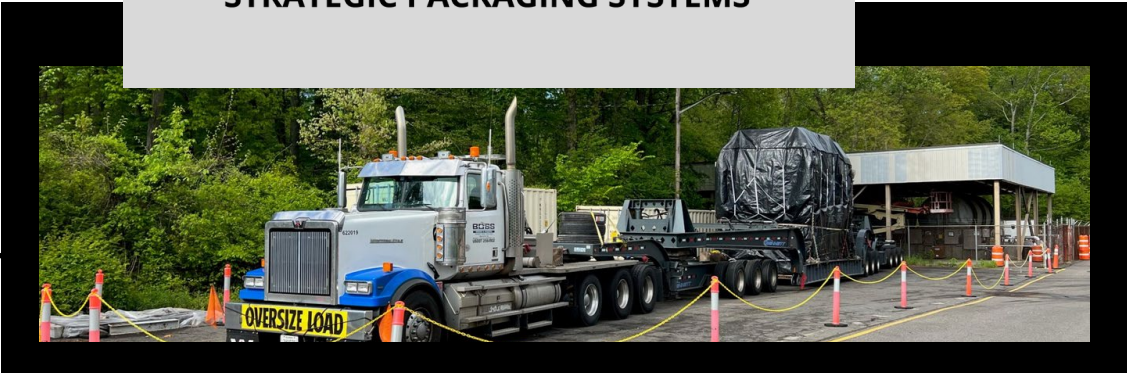
Principle Point(s) of Contact

NAME	TITLE	PHONE	EMAIL
Nancy Larson	Business Development Manager	206.235.7855	n.Larson@spsonline.biz
Tim Blythe	President	724.312.1757	tblythe@iceservicegroup.com
Dennis Morgan, II	CSO / Principal	412.916.5710	dmorgan@iceservicegroup.com

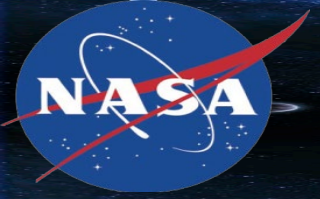


Strategic Packaging Systems

Custom IP-1, IP-2, and IP-3 packaging solutions.



NASA/MSFC



ABOUT STRATEGIC PACKAGING SYSTEMS



Founded in 2009 by Aldon Beale to provide a cost-effective alternative to traditional metal containers for radioactive, nuclear, and hazardous waste.

In 2019, Strategic Packaging Systems LLC was purchased by the Principals of I.C.E. Service Group, Inc. to form I.C.E. Packaging Company, LLC dba Strategic Packaging Systems.



Figure 1. The baseline metal box



Figure 2. The soft-sided waste container empty and full



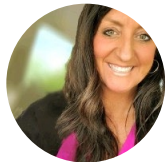
OUR TEAM



Manufacturing Facility → Madisonville, TN



MURRELLS INLET, SC

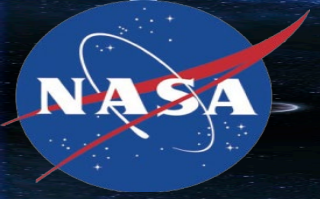


SPOKANE, WA



KEY POINTS

- Made in the USA
- HUBZone Certified Small Business.
- Quick production turn around (average 3 to 5 weeks).
- In-house design team to customize each project.
- Custom solutions. No "off the shelf" bags.
- IP-1, IP-2, and IP-3 rated packaging manufactured under NQA-1 program.
- Meet requirements of "Buy American Act."



BENEFITS OF SOFT SIDED PACKAGING

LESS TARE WEIGHT = REDUCED SHIPPING COST

- Freight charges to mobilize to the project site/facility.
- Increase in payloads mean less shipments overall.
- Option to ship by rail.
- Truck to rail = reduce overall shipping cost with more payload.

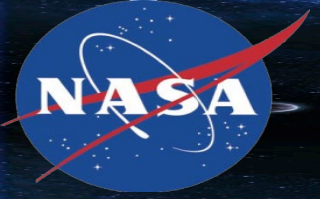
NO VARIABLE OR UNEXPECTED COSTS

- No rental fees
- No de-contamination.
- No equipment damage fees.

REDUCED PROJECT FOOTPRINT

- Up to 40 bags can fit collapsed on a 6' x 6' pallet.
- An empty metal container takes up the same space empty as it does loaded.



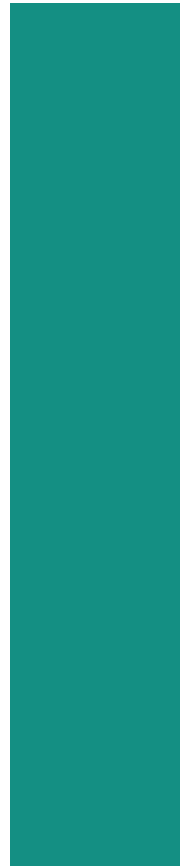


SOFT SIDED VS. METAL CONTAINER

SPS 3.5 YD STAND ALONE BAG
(B25 COMPARATIVE)



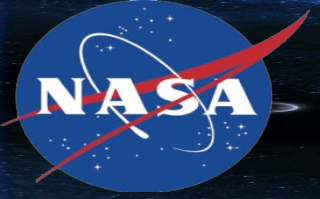
- 300 Packages per truckload (empty).
- Average Cost – Around \$600.
- Tare Weight – 32 lbs each.
- Load Capacity – 12,000 lbs.
- Minimal project footprint.



TRADITIONAL METAL B25
IP-90 BOX



- 28 per truckload (empty).
- Average Cost - \$2,500 each (minimum)
- Tare Weight – 800 lbs each.
- Load Capacity – 12,000 lbs.
- Large project footprint



SOFT SIDED VS. METAL CONTAINER

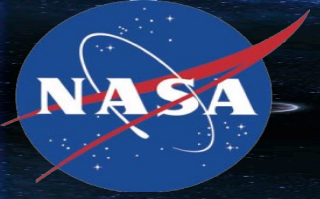
Durable, Safe, & Cost Effective



99.9% of the time soft sided bags are just as reliable & durable as the comparable metal container.

While soft-sided bags won't replace a metal container in every circumstance, our technology and available fabrics allow us to design a bag that is suitable for just about any project.

IP-2 stack test on 1CYD bag
Result - no obstructions to bag
after 24 hours with 30,000 pounds
stacked on bag.
(5x the load capacity)



CUSTOM DESIGN SOLUTIONS

Decommissioning & Large Component Support



VERMONT YANKEE NUCLEAR POWER PLANT DECOMMISSIONING SUPPORT

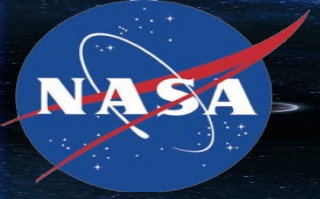
Custom concrete missile shields two-part pan and top. Featured access points for lifting, take up straps, and geotextile lining. The package was then lifted and loaded into a railcar with a custom blocking and bracing system to be transported for disposal.



DEPLETED URANIUM FLYWHEEL CUSTOM OVERPACK

This custom package-pallet combination helped our client safely contain the flywheel while allowing the package to be handled with a forklift by using the integrated forklift flap feature of the package.





CUSTOM OVERPACKS

Custom Fuel Rack Pan and Top



Benefits

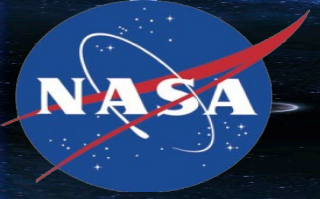
- Save time - NO cutting down pieces to fit into metal container.
- Save money - rated for IP-1 and offers durability and safety for significantly less money.
- Efficiency - custom design options such as multipoint or single point lifting. A metal container can only be lifted one way.



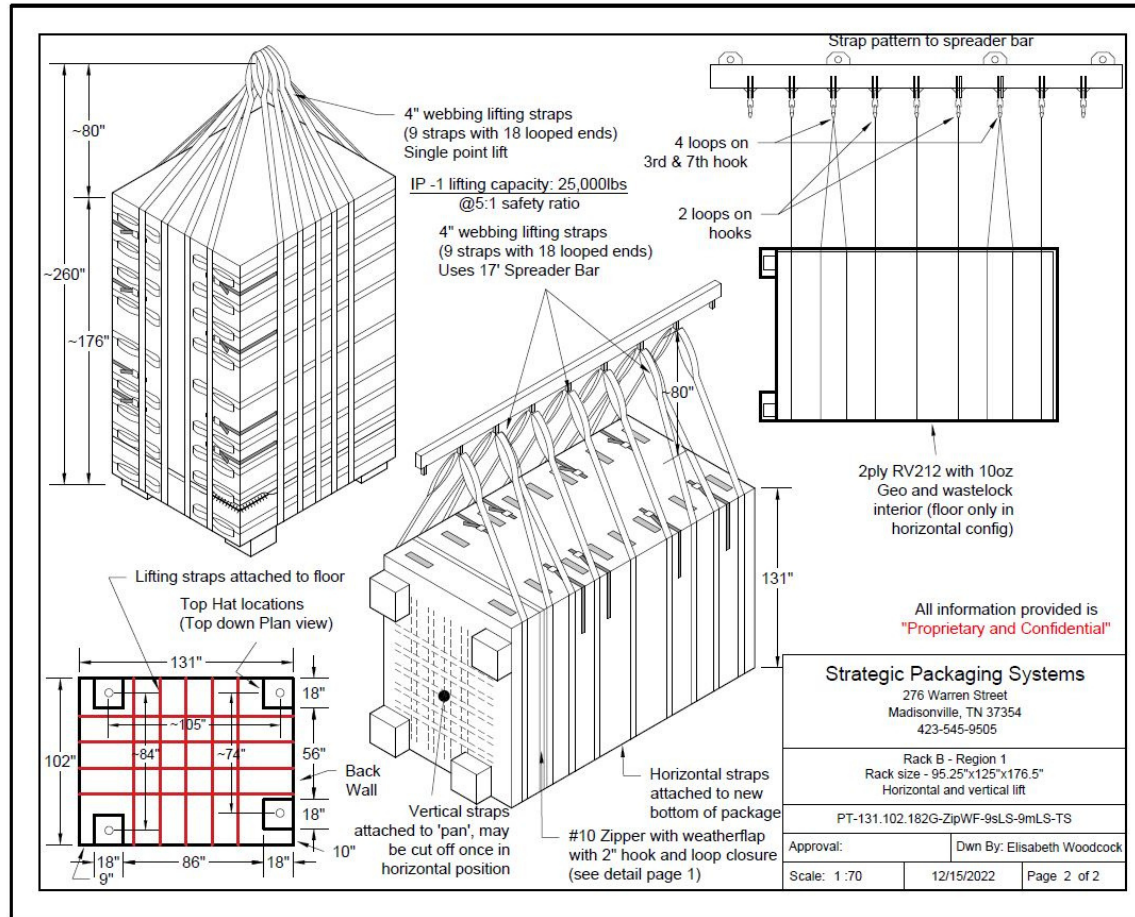
CUSTOM OVERPACKS

Options for Customization

- **Lifting Options:** Packages can be handled using lifting straps or custom pallets can also be used to move or lift the packaged object.
- **Bag Sizes:** Custom made to any size for objects like cargo containers, turbine rotors, 20 ft. and 40 ft. Sealand containers, fuel racks, feedwater heaters, and various over dimensional sized objects
- **Closure Options:** Hook and loop (duffle closure) or zipper closure with or without interior duffle closure.
- **Custom Options:** Take up straps for custom fit, different fabric weights and thickness, flame retardant fabrics, and geosynthetic liners for puncture resistance.



IN HOUSE DESIGN TEAM





SPS PRODUCT EXAMPLES

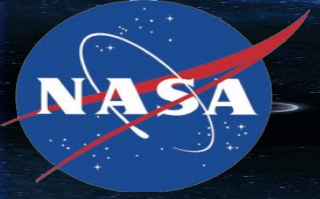
Dewatering Systems and Railcar Liners / Tarps



Geotextile water permeable package and frame system designed to dewater hazardous soils and contain solids to be sent for disposal.



Custom tarps can be designed with different fabric weights and thickness, flame retardant fabric, or water repellent fabric.

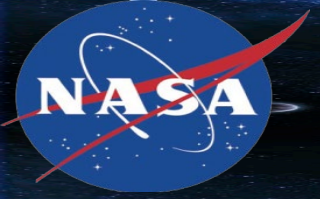


SPS PRODUCT EXAMPLES

Macro Encapsulation Packaging



Custom designed to any size for radioactive dry active waste (DAW), or contaminated debris such as lead, cadmium, & mercury.



SPS PRODUCT EXAMPLES

CUSTOM SOFT SIDED BAGS (LIFT LINERS)



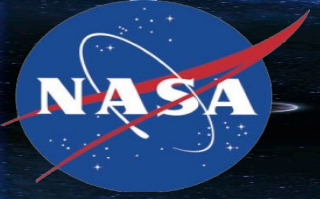
9 CYD Bag (20,000 lb.) Bag in Custom Lift/Loading Frame



9 CYD (20,000 lb.) Bag Commercial Nuclear Power Plant Remediation Project



25 CYD (50,000 lb.) Bag North-East Nuclear Decommissioning Project



QUESTIONS?



STRATEGIC PACKAGING SYSTEMS

www.spsonline.biz

276 Warren Street

Madisonville, TN 37354



Nancy Larson
Business Development Manager
Strategic Packaging Systems
nlarson@spsonline.biz
206-235-7855 – Direct

